

Attractions of Mt. Cameroon National Park

Mount Cameroon is the highest summit in West Africa (4,070 m). The park stretches from lowland rain forests at the atlantic coast through sub-montane and montane forest to alpine grassland at the peak. The mountain is an active volcano with numerous craters, crater lakes, caves, lava flows and ash fields. It presents a fascinating, diverse and astonishing landscape, ideal for hiking tours. You can discover the richness and beauty of its flora and fauna, with a lot of endemic species.



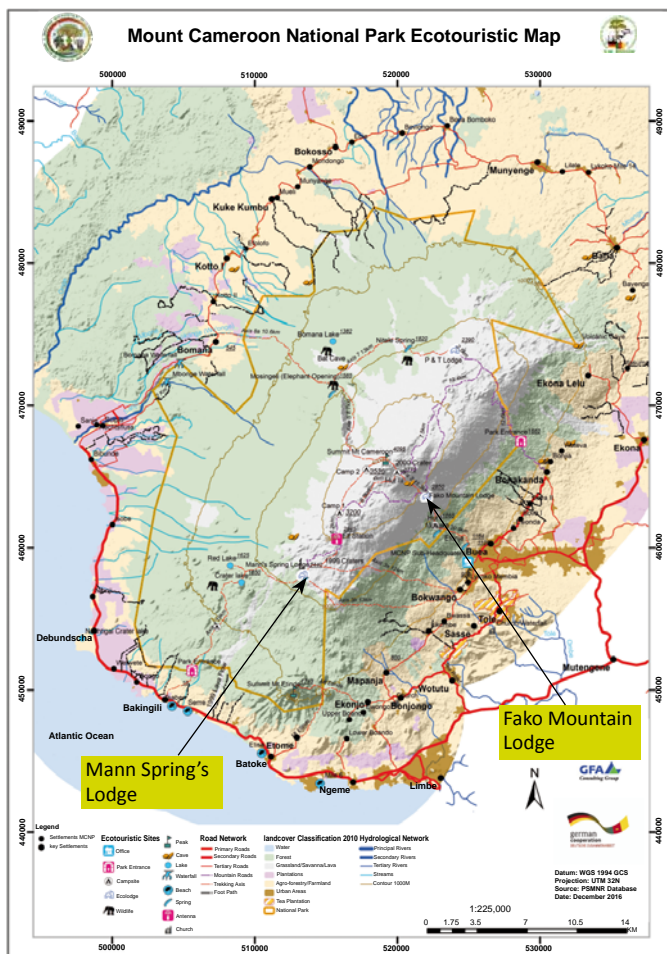
Mt. Cameroon is a unique point of observation for elephants, chimpanzees, drills, Preuss' monkeys and bush bucks. It has an important bird diversity and is an interesting place for bird watching. You can find here the endemic Mt Cameroon francolin. The mountain is a good spot to enjoy beautiful views of the night sky and stars.



The area around Mt Cameroon hosts a number of additional attractions of natural, cultural and historical value.

Credit Photo:

Christian Sefrin, Till Loeper, Yami Yules, Nyetam Jean-Marie, Denis Ndi-for, Frank Stenmanns, Karen Waterson, PSMNR camera trap



Reservation and information lodges:

EMICAM

Buea, Mt Cameroon National Park Headquarter

Tel.: (+237) 6 94 51 77 04 / (+237) 6 77 60 39 85

Email: emicamlodge@gmail.com

Reservations can be made also through the local tour operators who also provide guides and porters.

General Information:

MOUNT CAMEROON NATIONAL PARK

Buea

Tel.: (+237) 2 43 65 44 34

(+237) 6 75 33 28 71

Email: info@mtcameroonnationalpark.org

Website: www.mtcameroonnationalpark.org



Discover the Mount Cameroon National Park and its eco-lodges



Programme for the Sustainable Management of Natural Resources, South West Region (PSMNR-SWR)



KFW



Fako Mountain Lodge

Fako Mountain Lodge is situated at 2,800m altitude on the main hiking trail from Buea to the summit. The site offers great views of the landscape stretching down to Buea, Limbe and the coastal line up to Douala. The site is protected against wind through lava ridges all around.



Fako Mountain lodge has a restaurant, a bar and five cabins with three beds. All facilities are powered by solar energy.



Ten tent platforms are available. Guides and porters have their own accommodation and kitchen.



Mann's Spring Lodge

Mann's Spring Lodge is situated at 2,300 m altitude, on the edge between the forest and savannah. It offers splendid panoramic views.



The lodge can be reached on a day's walk directly from Buea or from Fako Mountain lodge. It can be used as a base to go to elephant view points around the crater lake.



Mann's Spring lodge has a restaurant, bar and six cabins –two in the savannah and four in the forest - each with three beds. The site is equipped with water and solar energy.

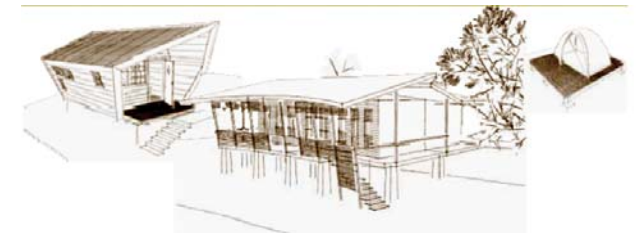


Ten tent platforms are available. Guides and porters have their own accommodation and kitchen.

Support of German Cooperation

The Programme for the Sustainable Management of Natural Resources, South West Region (PSMNR-SWR), co-financed by the Federal Republic of Germany through the German Development Bank KfW, has supported since 2006 the creation and management of the Mt Cameroon National park, promoting the involvement of adjacent local communities.

Architectural Design and Construction



The lodges were designed by the architect Dirk Harder, Germany, and built by "United Skills", Limbe.

Prices

Lodging in the cabins:

Beds are equipped with bed sheet, pillow and blanket. Occupants of the cabins have free access to shower, including towel and soap. Children below 12 years are lodged free of charge.

Prices per night and per cabin:

A cabin with one person :	20,000 Fcfa
A cabin with two persons :	25,000 Fcfa
A cabin with three persons:	30,000 Fcfa
Additional mattress on request:	12,500 Fcfa

Other prices per night and per person:

Camping in a tent*, on or outside of platform:	2,500 Fcfa
Shower for camper, incl. towel and soap:	2,000 Fcfa
Lodging for guides and porters:	1,000 Fcfa

*Tent not provided

Restaurants:

Food and drinks (coffee, tea, beer, soft drinks, wine, spirits) can be ordered on site. For larger groups it is advisable to order meals in advance. Breakfast (eggs, pancakes) and simple meals are available for a price range of FCFA 1,000–FCFA 4,500.